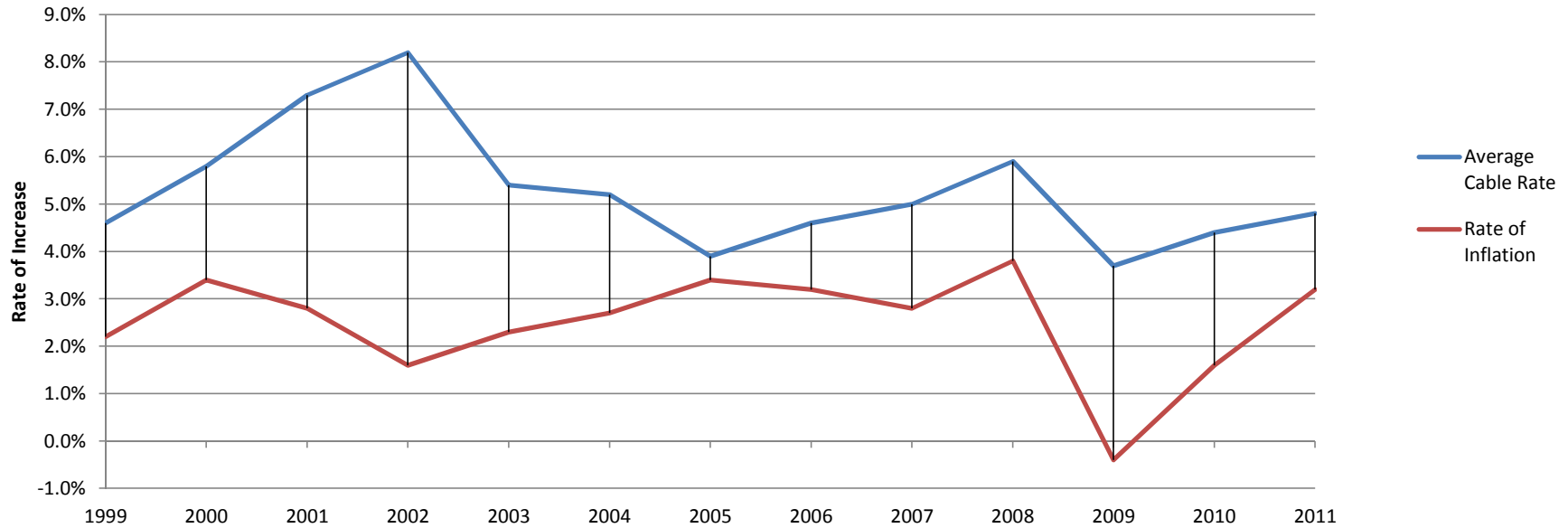


Cable rates have grown over the rate of inflation before retransmission consent payments.

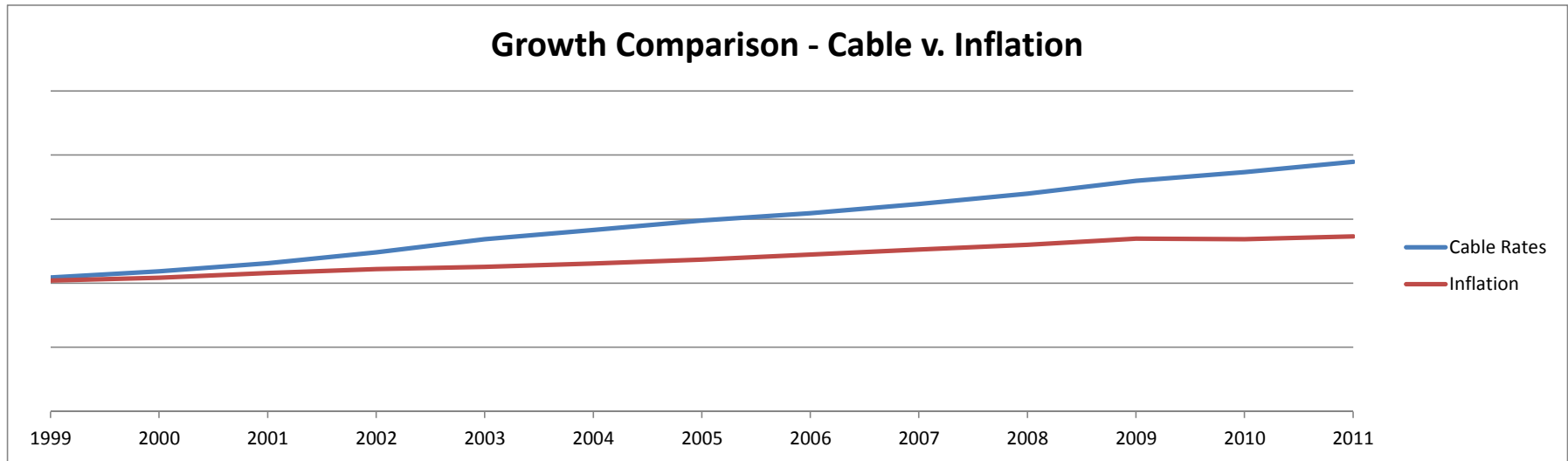


	1999	2000	2001	2002	2003	2004	2005	2006	2007	2008	2009	2010	2011
Cable Rate Increase*	4.6%	5.8%	7.3%	8.2%	5.4%	5.2%	3.9%	4.6%	5.0%	5.9%	3.7%	4.4%	4.8%
Rate of Inflation**	2.2%	3.4%	2.8%	1.6%	2.3%	2.7%	3.4%	3.2%	2.8%	3.8%	-0.4%	1.6%	3.2%

*FCC Cable Industry Price Reports

**Bureau of Labor Statistics

Growth Comparison - Cable v. Inflation



	1999	2000	2001	2002	2003	2004	2005	2006	2007	2008	2009	2010	2011
Cable Rate Increase*	4.6%	5.8%	7.3%	8.2%	5.4%	5.2%	3.9%	4.6%	5.0%	5.9%	3.7%	4.4%	4.8%
Rate of Inflation**	2.2%	3.4%	2.8%	1.6%	2.3%	2.7%	3.4%	3.2%	2.8%	3.8%	-0.4%	1.6%	3.2%

*FCC Cable Industry Price Reports

**Bureau of Labor Statistics